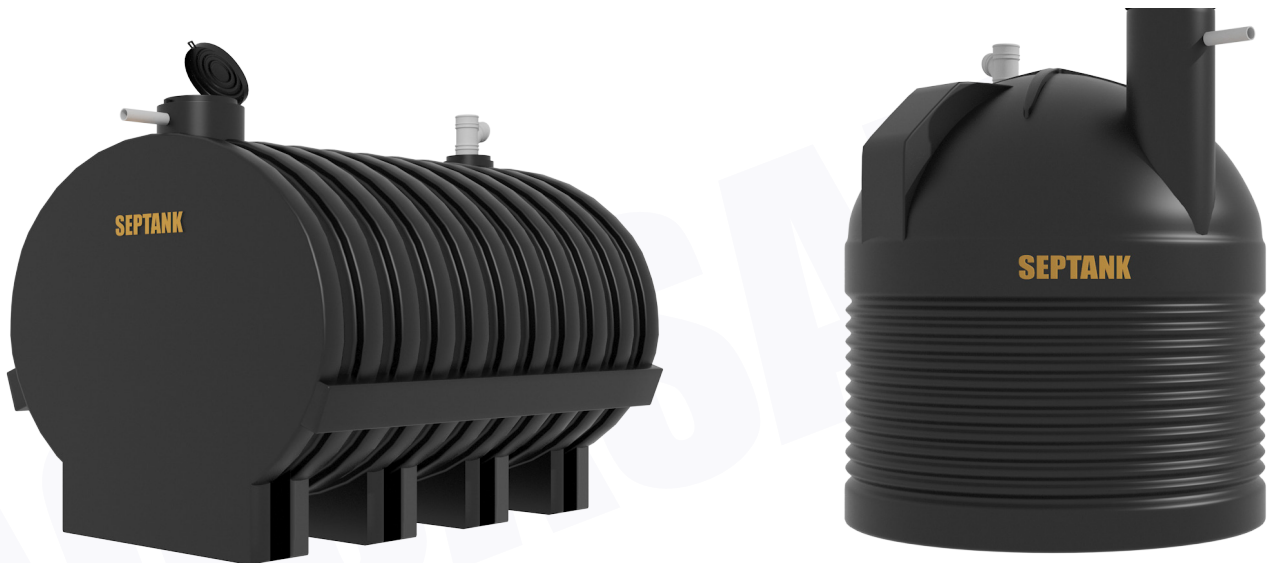


SEPTANK

SEPTIC TANK

The State of the Art Septic Tank - made with food grade polyethylene and based on a very successful South African design. Has more than 30 years' expected lifespan through effective stabilization of polyethylene against the harmful effect of sunlight. This is achieved by incorporating >2.3% carbon black into polyethylene by melt compounding process and use of a suitable carbon black master batch.



SPECIFICATIONS				
PRODUCT	CAPACITIES		DIMENSIONS CMS	
	LTRS	GAL	HEIGHT	DIA
SPT 200	2000	435	164	142
SPT 300	3000	652	198	142

Features

- *One-piece moulding*
- *No Joints*
- *Leak-proof*
- *30 years' expected lifespan*
- *Quick and easy to install*
- *Can stand presence of soil and water-when installed underground*

Applications

- For homes, SMEs, Schools, Churches, Mosques, IDP/Refugee Camps